

DISCOVERY QUILT

Fabric Selection

Background Fabric 1 is the prominent fabric in this quilt, so it should have some style to it. You can use a print or a "textured" solid but not a true solid fabric. No directional prints, stripes, or plaids. Background 2 should be similar but more plain.

Fabric 1 is the primary contrast fabric and is also used for the border. It should be a strong contrast to the background fabrics. No directional prints, stripes, or plaids.

The other fabrics are coordinates to Fabric 1. They should contrast with the background fabrics but can be directional prints, solids, stripes, or plaids.

Background Fabric 1: 4 yards

Background Fabric 2: 3/4 yard

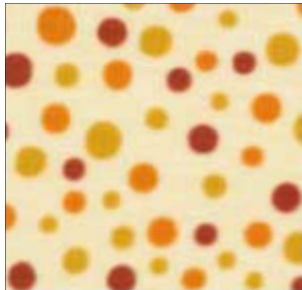
Fabric 1: 3 1/2 yards

Fabric 1A: 1/4 yard

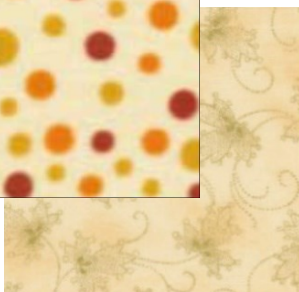
Fabric 2: 1 1/4 yard

Fabric 2A: 1/4 yard

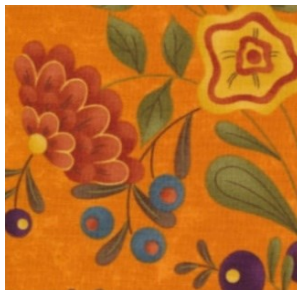
BACKGROUND 1



BACKGROUND 2



FABRIC 1



FABRIC 1A

FABRIC 2

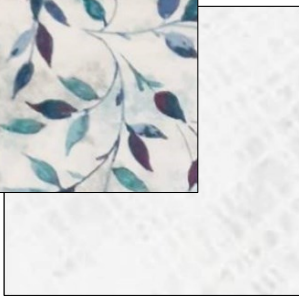


FABRIC 2A

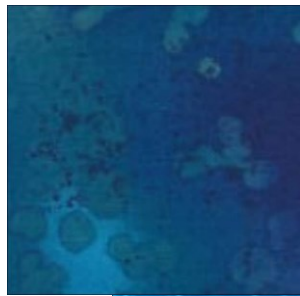
BACKGROUND 1



BACKGROUND 2



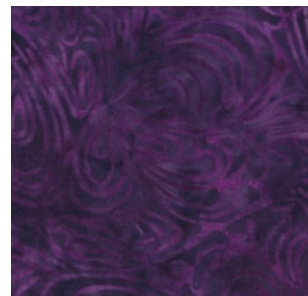
FABRIC 1



FABRIC 1A



FABRIC 2



FABRIC 2A



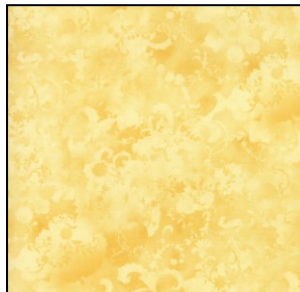
BACKGROUND 1



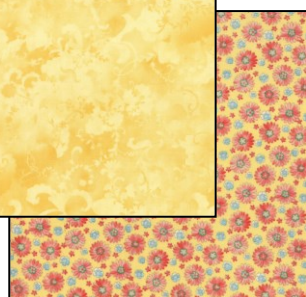
BACKGROUND 2



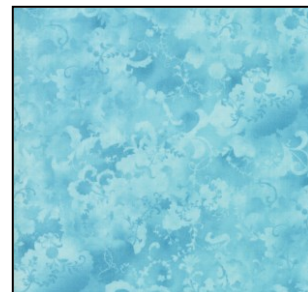
FABRIC 1



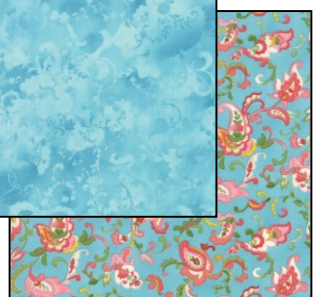
FABRIC 1A



FABRIC 2



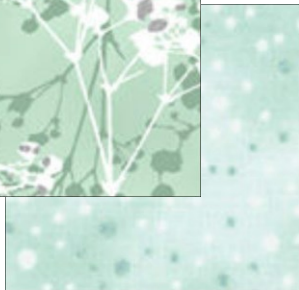
FABRIC 2A



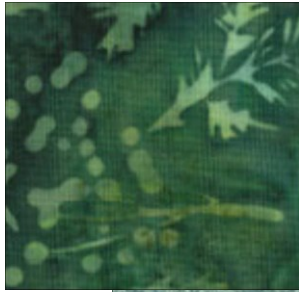
BACKGROUND 1



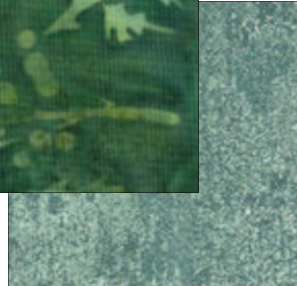
BACKGROUND 2



FABRIC 1



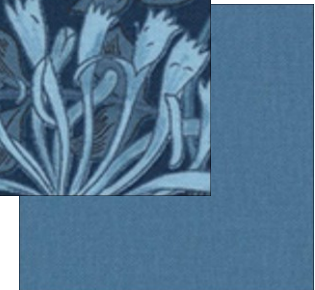
FABRIC 1A



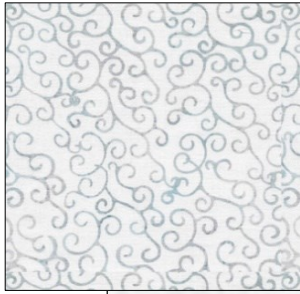
FABRIC 2



FABRIC 2A



BACKGROUND 1



BACKGROUND 2



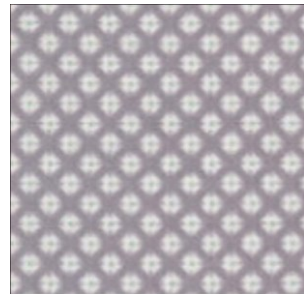
FABRIC 1



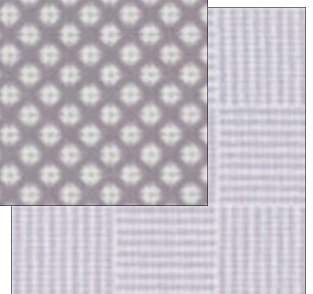
FABRIC 1A



FABRIC 2



FABRIC 2A



BACKGROUND 1



BACKGROUND 2



FABRIC 1



FABRIC 1A



FABRIC 2



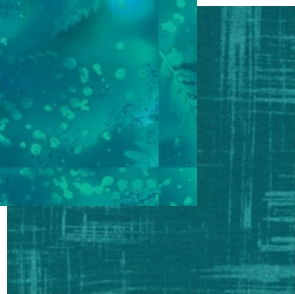
FABRIC 2A



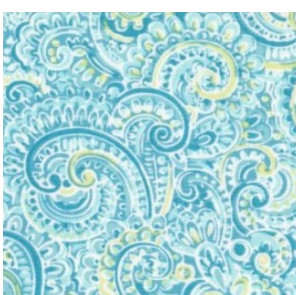
BACKGROUND 1



BACKGROUND 2



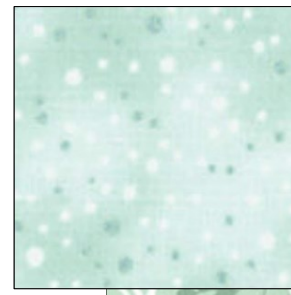
FABRIC 1



FABRIC 1A



FABRIC 2



FABRIC 2A

